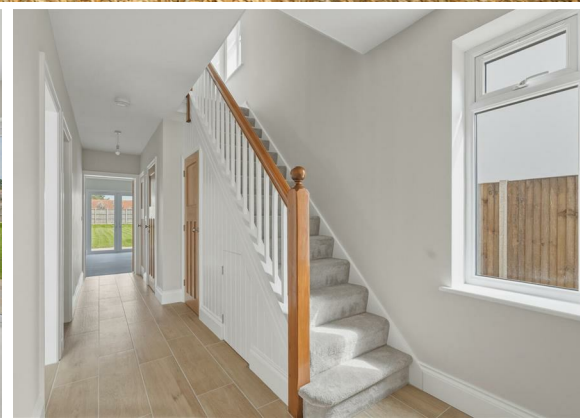




3 Bed  
House - Semi-Detached  
located in

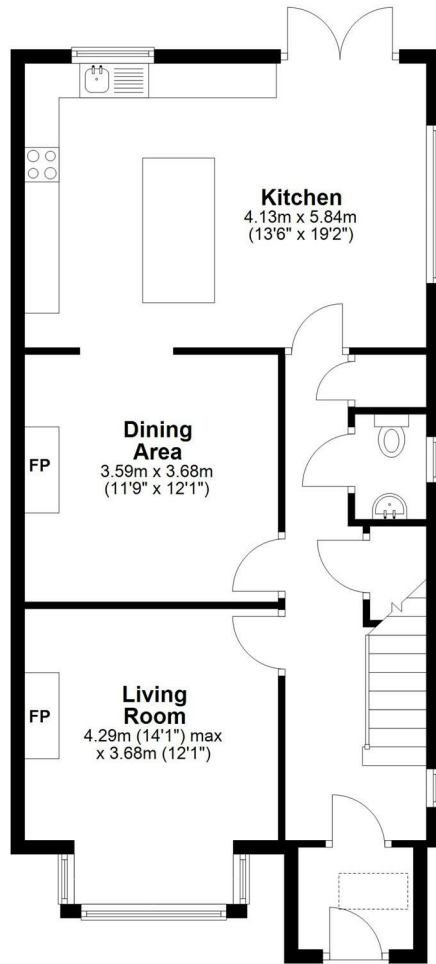
£1,795 Per month



**FREMONT**  
ESTATES

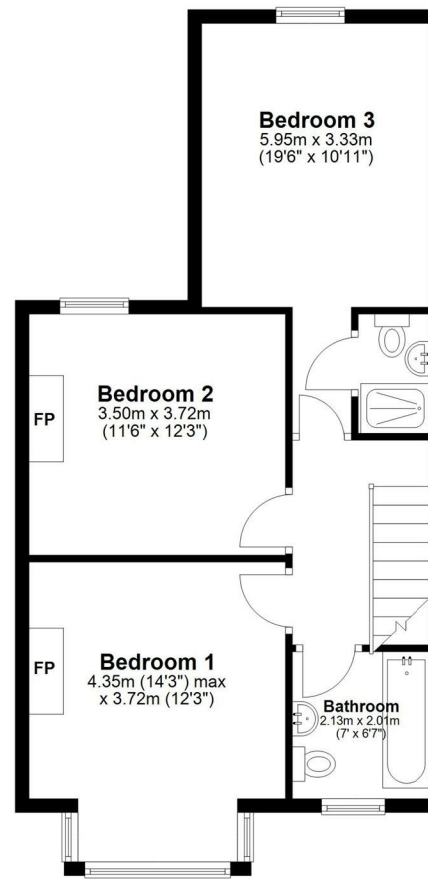
### Ground Floor

Approx. 70.6 sq. metres (759.8 sq. feet)



### First Floor

Approx. 57.2 sq. metres (615.8 sq. feet)



Total area: approx. 127.8 sq. metres (1375.6 sq. feet)

Disclaimer: This floorplan is for illustrative purposes only and should not be relied upon as an accurate representation of the property's dimensions or layout  
Plan produced using PlanUp.

### DIRECTIONS

### CONTACT

310 Constitution Hill  
Norwich  
NR6 7RF

E: [office@fremontstates.co.uk](mailto:office@fremontstates.co.uk)  
T: 01603 363777  
<https://fremontstates.co.uk/>

EPC Rating: B  
Council Tax Band: C

